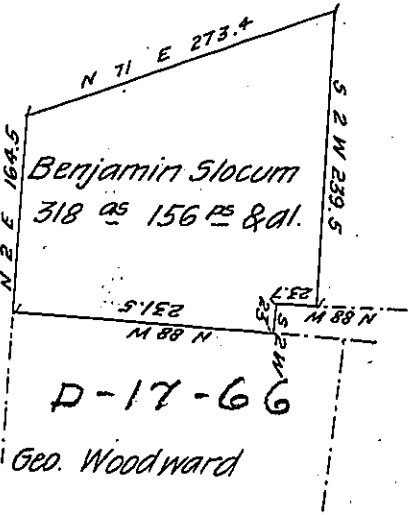


Jos. Avertson



Thos Wooley

Draft of a tract of land situate in Hanover township in Luzerne County adjoining Geo. Woodward & others containing three hundred eighteen acres & one hundred fifty six perches & allowance of six per ct. &c. Surveyed the 8 day of May 1839 by Zeb^r H. Stevens late Deputy Surveyor for Benjamin Slocum by virtue of his Warrant dated the 8th day of January 1793 and Certified by me this 19th day of December 1848.

To

Henry Colt D.S.

John Laporte Esqr

Surveyor General

IN TESTIMONY that the above is a copy of the original remaining on file in the Department of Internal Affairs of Pennsylvania, made conformably to an Act of Assembly approved the 16th day of February 1833, I have hereunto set my hand and caused the Seal of said Department to be affixed at Harrisburg, this seventh day of March 1907

Isaac P. Brown
Secretary of Internal Affairs.